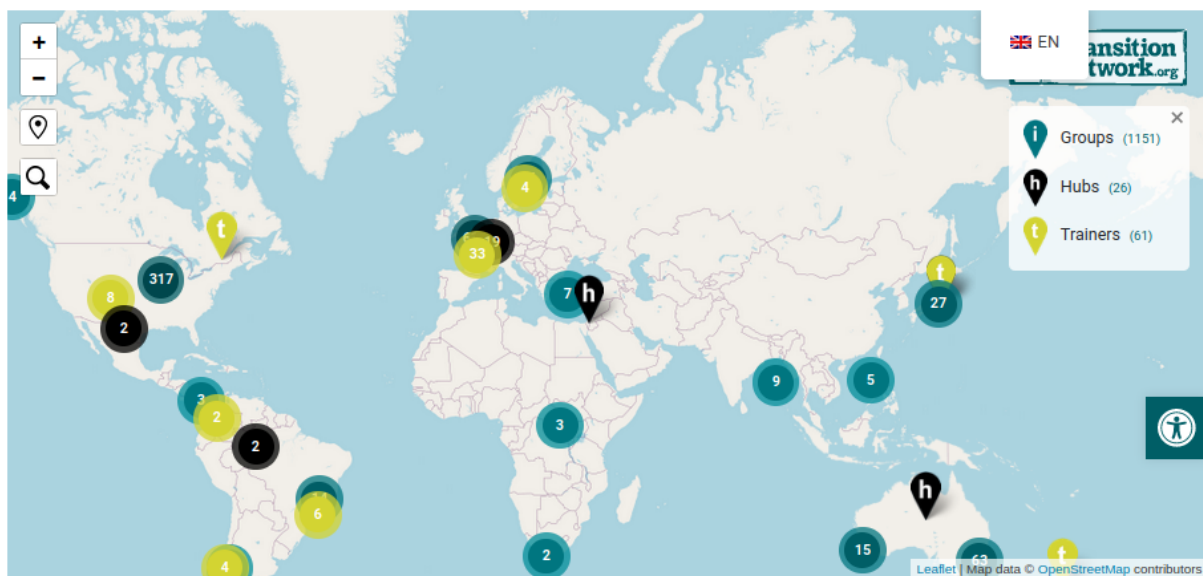


# Hub - Embedding maps on your sites

## Dashboard

[Account Details](#) [Hub Admin](#) [Group Admin](#) [My Trainer Profiles](#) [Filesharing](#) [Embed Maps](#)

### Global Map



Show **All** Hub **All** Country **All** ☐ Only show hubs that offer training

To embed this map, please copy and paste the HTML below:

```
<iframe src="https://transitiongroups.org/map/" width="100%" height="550px" frameBorder="0" style="display: block;" allow="geolocation;"></iframe>
```

[Preview Map](#)

### Group map for **England & Wales**

On this page <https://transitiongroups.org/account#nav-maps/>

You will find the code to embed the map for your hub.

It is possible to embed a translated version of the map by adding a two letter language code to the link you embed by adding the two letter language code.

The example code provided to embed a map for the Japanese hub is

```
“ <iframe src="https://transitiongroups.org/map/?hub_name=japan" width="100%" height="550px" fra
```

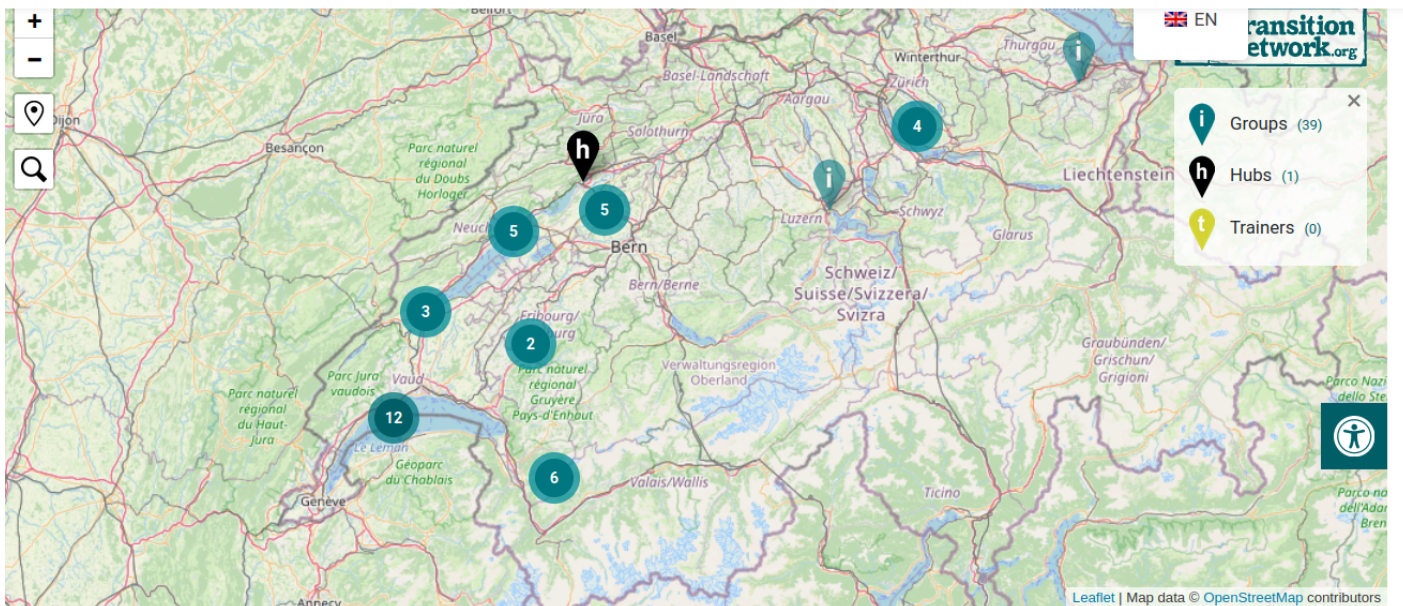
You can find the two letter language code by changing the site to your preferred language using the drop down and then looking at the URL. So if I change the language to Japanese, I see the URL changes to

```
“ https://transitiongroups.org/ja/
```

So I just need to edit the provided embed code to be

```
“ <iframe src="https://transitiongroups.org/ja/map/?hub_name=japan"  
width="100%" height="550px" frameBorder="0" style="display: block;"  
allow="geolocation 'src'"></iframe>
```

An example of the embed is here: <https://reseautransition.ch/nos-prestations/carte-initiatives/>



Show **All** Hub **Réseau Transition Suisse** Country **All** ☐ Only show hubs that offer training

Revision #2

Created 10 October 2023 18:52:26 by Admin

Updated 18 October 2023 13:29:37 by Admin